





**ASNF**  
HUSSEINI GROUP

**clearline**






## THE EVOLVING OFFICE

---

Clearline is a tailor-made architecturally designed system that redefines the office and meets the spatial, organizational and communicative requirements of the office of the future.

It subdivides your offices into autonomous and building-independent office spaces and remains variable at any time for optimizing the workflow in open spaces while minimizing the conversion costs.

Clearline creates evolving architecture in industrial and commercial buildings, lofts or public spaces, and provides open-plan offices with flexible and continually new office structures. As a Changeable Office System, Clearline takes the office to its logical conclusion - The evolving office that meets your business changes.



# THE FUTURE IS LISTENING

---

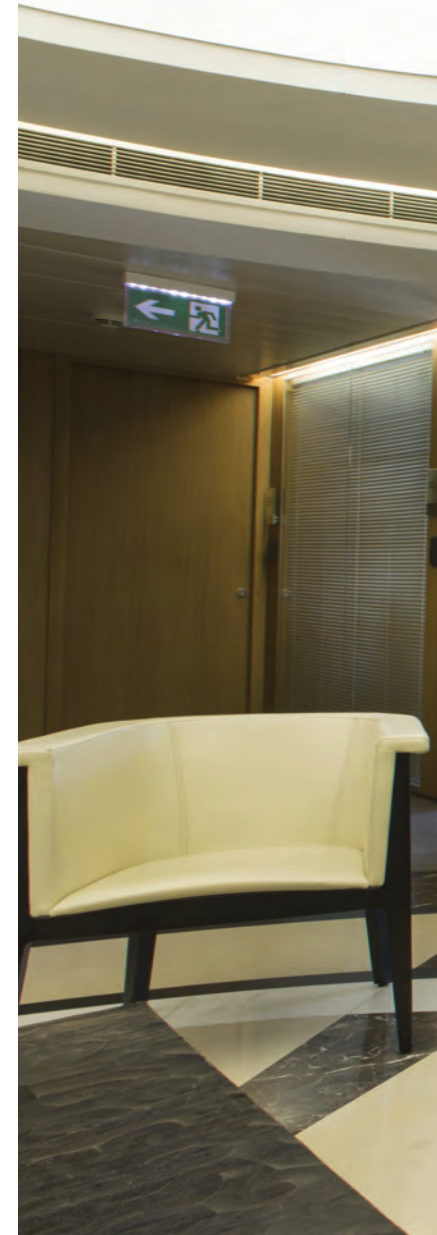
In a world where environmental needs and orientations vary and evolve, our systems remain freely applied to the industrial and sustainable sciences of recent decades. From environment changes at work, business organization and its spaces, they alternate with amazing regularity. Flexible walls are therefore less a judgment on contemporary spatial systems and more a requirement.

Our products aim to meet this requirement. Their minimalist timeless design endures through change. A high degree of modularity brings necessary application versatility, allowing the adequate spatial structuring of incoming work processes, the minimization of conversion costs, and the design of future environments in terms of both function and aesthetics.

Our offices in Lebanon are keen to handle your next project. We provide an integrated design process from the concept through budget, draft, performance planning, to building supervision and assembly. With the support of our global and local offices and partners, allow yourself to be inspired by our design and planning within a range of varied components that our systems offer.

## *Adapt to Change*

*In a changing environment that acts and evolves with your business needs, we innovate- It grows, we expand. It interacts, we communicate. It achieves, we fulfill.*







## OFFICES WITH PERSONNALITY

---

An innovative choice, a way to divide studying, conversation and meeting space with creativity. A play of pure materials: glass and metal for architecture on a human scale, matched with the warm tones of wood to give personality to working environments





Branch  
Manager







# PRODUCTIVITY

---

As corporate rates of change continue to accelerate, facility managers need interior offices that remain flexible, while still offering personnel privacy. For optimum productivity, Clearline partitioning system can accommodate change in a very quick time. It is flexible, affordable, high performing and environmentally better alternative to fixed drywall construction in offices, schools, laboratories, medical centers, and others.

## 1. LONG-TERM ECONOMY AND EFFICIENCY

Over the complete lifespan of a building, Clearline partitions will be more economical than cheaper alternatives, but significantly cheaper after the first modification. They require no wet work, taping and jointing treatment, painting or field application of wall coverings. Pre-finished panels allow faster completion and earlier occupancy.

## 3. INSTALLATION

Clearline partitioning system is easy, quick and logical to install, which lowers installation time and ensures that deadlines are kept. New installations or reconfigurations of office space can be executed with a minimum of noise and inconvenience and it is possible to alter partitions while the office employees remain working at their desks.

## 5. FIRE RESISTANCE AND SOUND REDUCTION

In projects where fire resistance is requested, ASNAF has many alternatives. Our systems are all packed with rockwool, which improves fire resistance and sound reduction capabilities.

## 2. RECONFIGURATION

With Clearline relocatable partitioning system, solid panels, glass and door modules are readily interchangeable and permit complete freedom to change office space, with full salvaging-ability of materials, which is economical in case of future needs to move. Fast disassembly and reassembly minimizes the disruption and expense of frequent office moves, without damage to adjoining carpeting and ceiling tiles.

## 4. CABLING

The internal structure is prepared for easy running of cables. Usually, a technical panel is placed near doors, to facilitate the integration of electrical outlets and switches.

## 6. KEY BENEFITS

- Stable and mechanically resistant
- Designed for cable integration
- Multi materials and/or colors
- Provides high acoustic performance
- Provides high stability in case of fire
- Flexible in sizes
- Fixed by pressure or by screws
- Easily installed and removed
- Reusable

## **SYMPATHETIC, COZY & COMFORTABLE WORKSPACE**

*Clearline partitions provide comfortable workspace environment, making your office more cozy and sympathetic and reflecting your true identity.*



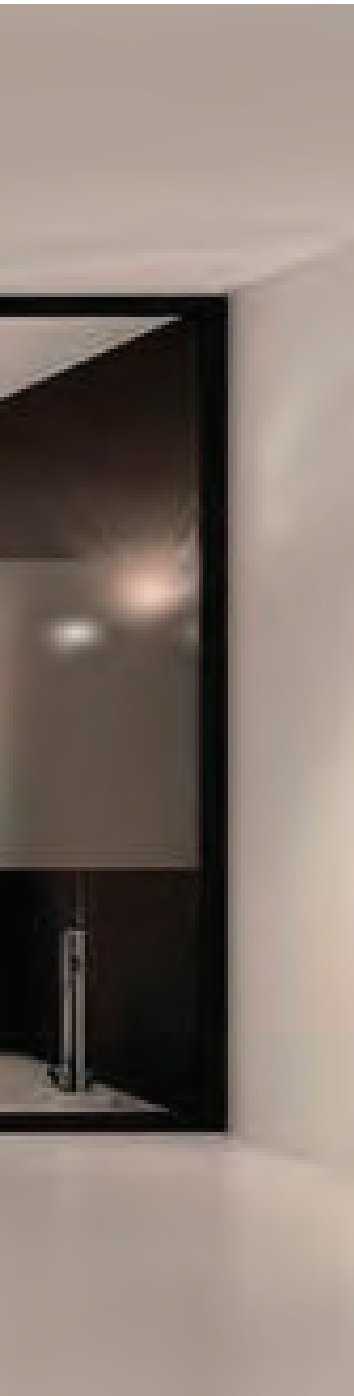




# LET THE LIGHT IN

---

*Clearline offers glass to glass to enrich your office and meeting rooms with more light while respecting your privacy to your liking.*



# PROFESSIONAL SERVICES

Clearline is not just a partitioning system, it is a whole concept. From early phases of system creation, to sketches and designs, to digital creations, then to practical installation and finally technical assistance and maintenance for years to come.

## CREATING A CONCEPT

Our team includes our clients too. It is only in dialogue and through communication with you that complex problems are reduced to simple solutions. your idea become our concept.

## DIGITAL CREATION

Your ideas and our sketches translate in digital creations before any site implementations. This ensures trouble-free installations at later stages.

## INSTALLATIONS

Exceptional work is the standard. We take great pride in our products, and build them to be among the best. But even more than this, we pride ourselves with our service.

## TECHNICAL ASSISTANCE

Our courteous and professional team ensure installations at your site runs as smoothly as possible.











## INTERIORS TO MATCH EVERY NEED

---

Designers are privileged to choose from virtually unlimited finishes to make up for every taste. Metal, wood, and glass all have same hairline joints which provide seamless smooth walls that provide comfort for the users while preserving technical aspects of the system intact.





Configurations change as needs change.

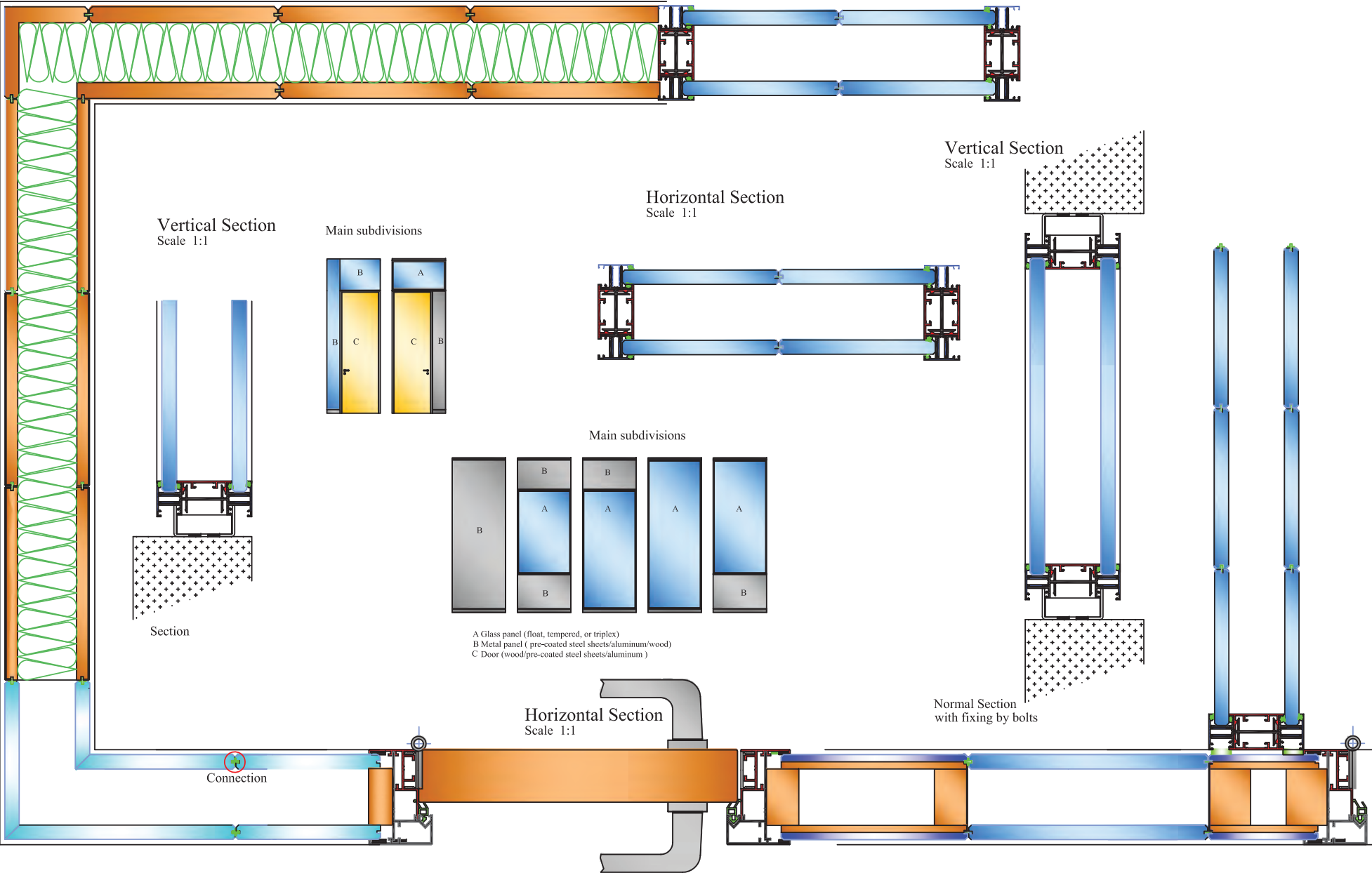
---

*Sed lorem libero, posuere eu velit id, elementum iaculis metus. Proin sapien nulla, tincidunt scelerisque urna eu, facilisis tempor arcu. Pellentesque volutpat lacus vel felis rutrum, eget volutpat velit placerat. Nam rhoncus vehicula est, sit amet sodales lacus vulputate.*





# CLEARLINE



## TECHNICAL SPECIFICATIONS

<b>Wall thickness</b>	80mm / 102mm
<b>Maximum Height</b>	3200 mm for full height glass panel
<b>Width of Modules</b>	300 to 1500 mm
<b>Average Weight</b>	30 - 50 kg per sqm
<b>Ceiling / Floor Track height</b>	30mm
<b>Wall Starter / finisher</b>	30mm
<b>Joints</b>	3mm
<b>Glass thickness (toughened)</b>	10mm
	12mm
<b>Laminated glass thickness</b>	10.38mm
	12.38mm
<b>Accoustic laminated glass thickness</b>	12.76mm
<b>Toughened glass for door</b>	10mm
	12mm
<b>Solid and double door leaf</b>	40-45mm
<b>Ceiling adjustment</b>	up to 20mm
<b>Side/wall adjustment</b>	up to 20mm





## CONTACT US

Jbeil, Blat Kartboun - LAU old road - ASNAF Hussein Group building  
Lebanon

P: +961 9 795335 | +961 9 795336

F: +961 9 796210

M: +961 70 076633

E: [asnaf@husseingroup.com](mailto:asnaf@husseingroup.com)

W: [www.husseingroup.com](http://www.husseingroup.com)

